



**REGIONAL SPECIALISED METEOROLOGICAL CENTRE-TROPICAL CYCLONES, NEW DELHI
TROPICAL WEATHER OUTLOOK**

DEMS-RSMC TROPICAL CYCLONES NEW DELHI DATED 23.08.2024

TROPICAL WEATHER OUTLOOK FOR NORTH INDIAN OCEAN (THE BAY OF BENGAL AND THE ARABIAN SEA) VALID FOR NEXT 168 HOURS ISSUED AT 0600 UTC OF 23.08.2024 BASED ON 0300 UTC OF 23.08.2024.

BAY OF BENGAL:

YESTERDAY'S LOW PRESSURE AREA OVER NORTH BANGLADESH & NEIGHBOURHOOD LAY OVER NORTHERN PARTS OF WEST BENGAL AND ADJOINING AREAS OF NORTHEAST JHARKHAND AT 0300 UTC OF TODAY, 23RD AUGUST 2024. THE ASSOCIATED CYCLONIC CIRCULATION EXTENDED UPTO 7.6 KM ABOVE MEAN SEA LEVEL. IT IS LIKELY TO MOVE NEARLY WESTWARDS TOWARDS JHARKHAND DURING NEXT 24 HOURS.

CLOUDS ASSOCIATED WITH LOW PRESSURE AREA ARE SCATTERED TO BROKEN LOW AND MEDIUM CLOUDS WITH EMBEDDED INTENSE TO VERY INTENSE CONVECTION LAY OVER BIHAR JHARKHAND, SUB HIMALAYAN AND GANGETIC WEST BENGAL, ORISHA, BANGLADESH & NORTH BAY OF BENGAL (MINIMUM CTT MINUS 93 DEG CEL).

A FRESH CYCLONIC CIRCULATION LAY OVER NORTH BAY OF BENGAL AT 5.8 KM ABOVE MEAN SEA LEVEL AT 0300 UTC OF TODAY'S 23RD AUGUST 2024.

SCATTERED TO BROKEN LOW AND MEDIUM CLOUDS WITH EMBEDDED INTENSE TO VERY INTENSE CONVECTION LAY OVER NORTH AND CENTRAL BAY OF BENGAL & SOUTH ANDAMAN SEA. SCATTERED TO BROKEN LOW AND MEDIUM CLOUDS WITH EMBEDDED MODERATE TO INTENSE CONVECTION LAY OVER SOUTH BAY OF BENGAL NORTH ANDAMAN SEA & GULF OF MARTABAN.

***PROBABILITY OF CYCLOGENESIS (FORMATION OF DEPRESSION) DURING NEXT 168 HRS:**

24 HOURS	24-48 HOURS	48-72 HOURS	72-96 HOURS	96-120 HOURS	120-144 HOURS	144-168 HOURS
NIL	NIL	NIL	NIL	NIL	NIL	NIL

***NOTE: EVERY 24HR FORECAST IS VALID UPTO 0300 UTC (0830 IST) OF NEXT DAY**

ARABIAN SEA:

YESDERDAY'S LOW-PRESSURE AREA OVER EASTCENTRAL ARABIAN SEA OFF KARNATAKA-GOIA COASTS LAY OVER EASTCENTRAL ARABIAN SEA OFF MAHARASHTRA COAST AT 0300 UTC OF TODAY, 23RD AUGUST 2024. THE ASSOCIATED CYCLONIC CIRCULATION EXTENDED UPTO 3.1 KM ABOVE MEAN SEA LEVEL TILTING SOUTHWESTWARDS WITH HEIGHT. IT IS LIKELY TO WEAKEN DURING NEXT 12 HOURS.

CLOUDS ASSOCIATED WITH LOW PRESSURE AREA ARE SCATTERED LOW AND MEDIUM

Cloud distribution: (a) Isolated: <25%, Scattered:25-50%, Broken: 51-75%, Solid:>75%, Convection Intensity: (a) Weak: Cloud Top Temperature (CTT) >-25°C, (b) Moderate: CTT: - 25°C to -40°C, (c) Intense: CTT: - 41°C to -70°C and (d) Very Intense: : Less than -70°C
PROBABILITY OF CYCLOGENESIS (FORMATION OF DEPRESSION):NIL: 0%, LOW: 1-33%, , MODERATE: 34-66% AND HIGH: 67-100%
This is a guidance Bulletin for WMO/ESCAP Panel Member countries. Visit respective National websites for Country specific Bulletins

CLOUDS WITH EMBEDDED INTENSE TO VERY INTENSE CONVECTION LAY OVER EASTCENTRAL ARABIAN SEA, GULF OF CAMBAY (MINIMUM CLOUD TOP TEMPERATURE MINUS 93° CEL).

SCATTERED TO BROKEN LOW AND MEDIUM CLOUDS WITH EMBEDDED INTENSE TO VERY INTENSE CONVECTION LAY OVER EASTCENTRAL ARABIAN SEA AND GULF OF CAMBAY. SCATTERED LOW AND MEDIUM CLOUDS WITH EMBEDDED MODERATE TO INTENSE CONVECTION LAY OVER WESTCENTRAL & SOUTHWEST ARABIAN SEA AND ISOLATED WEAK TO MODERATE CONVECTION LAY OVER REST OF ARABIAN SEA.

***PROBABILITY OF CYCLOGENESIS (FORMATION OF DEPRESSION) DURING NEXT 168 HRS:**

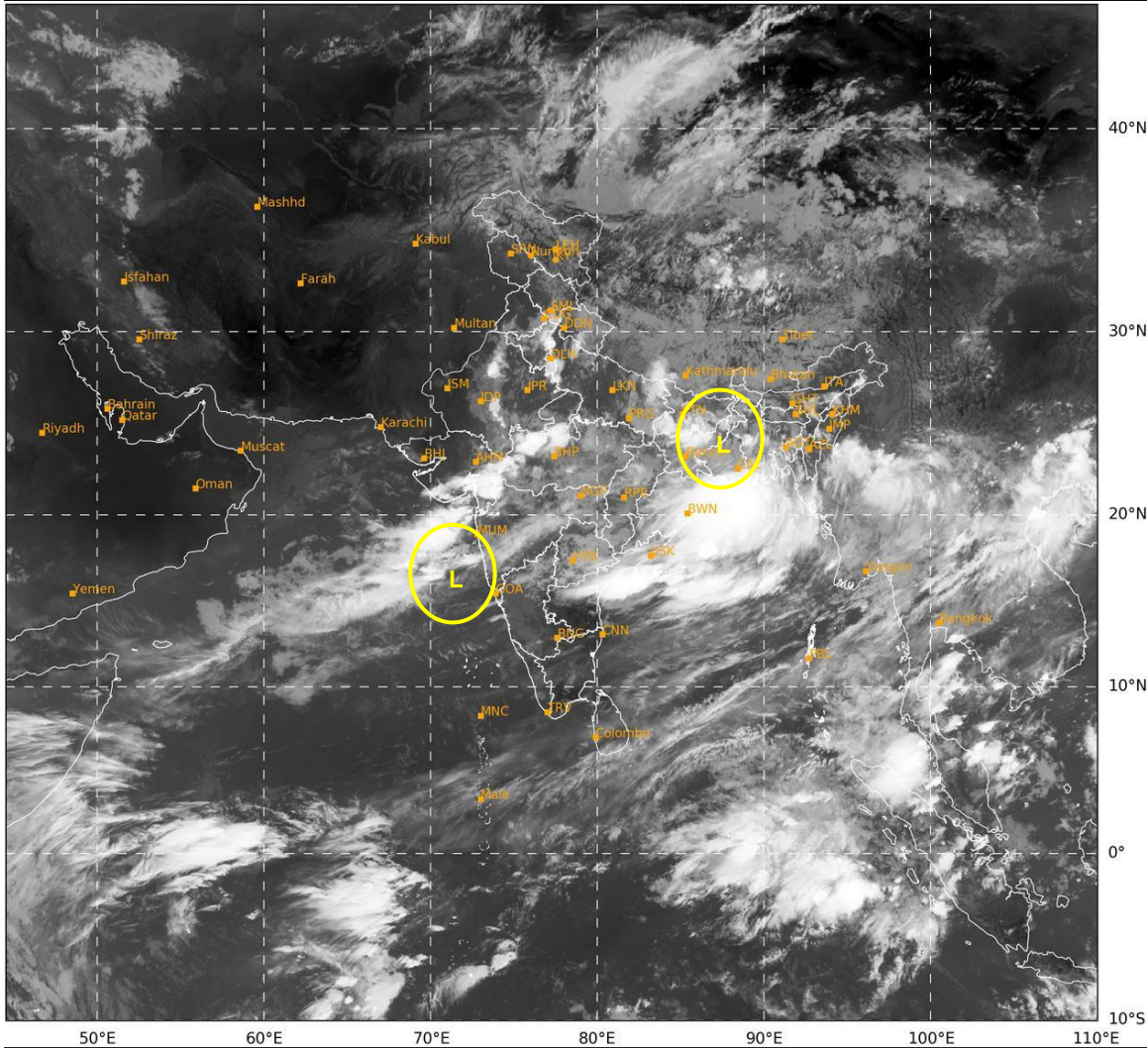
24 HOURS	24-48 HOURS	48-72 HOURS	72-96 HOURS	96-120 HOURS	120-144 HOURS	144-168 HOURS
NIL	NIL	NIL	NIL	NIL	NIL	NIL

***NOTE: EVERY 24HR FORECAST IS VALID UPTO 0300 UTC (0830 IST) OF NEXT DAY**

REMARKS: NIL

SAT : INSAT-3DR IMG
 IMG_TIR1 10.8 um
 L1C Mercator

23-08-2024/(0345 to 0412) GMT
 23-08-2024/(0915 to 0942) IST



383 936
 IMD, DELHI

L: LOW PRESSURE AREA

Cloud distribution: (a) Isolated: <25%, Scattered:25-50%, Broken: 51-75%, Solid:>75%, Convection Intensity: (a) Weak: Cloud Top Temperature (CTT) >-25°C, (b) Moderate: CTT: - 25°C to -40°C, (c) Intense: CTT: - 41°C to -70°C and (d) Very Intense: : Less than -70°C
 PROBABILITY OF CYCLOGENESIS (FORMATION OF DEPRESSION):NIL: 0%, LOW: 1-33%, , MODERATE: 34-66% AND HIGH: 67-100%
 This is a guidance Bulletin for WMO/ESCAP Panel Member countries. Visit respective National websites for Country specific Bulletins